

In this newsletter
read about

- cAP LTE12 ax
- GPeRx4
- CSS318-16G-2S+IN
- FTC21
- IoT updates
- Return of the RB912: D.I.Y. Bestseller!
- New YouTube videos and FINAL NEWS of 2024!

cAP LTE12 ax

\$ 229

PDF



for all your business needs,
even without a dedicated ISP connection!




802.11ax
Wireless



2x
**1 GIGABIT
ETHERNET PORTS**
(SUPPORT 10M / 100M / 1G SPEEDS)



MULTIPLE POWERING
OPTIONS



BUILT-IN CAT12
600 MBPS LTE MODEM




REMAINS HIDDEN IN
PLAIN SIGHT




MODERN QUAD-CORE
1.8 GHz CPU



ROUTEROS V7



MANAGE HUNDREDS OF
DEVICES EASILY WITH CAPsMAN
MANAGEMENT SYSTEM!



POE-IN & POE-OUT TO
POWER OTHER DEVICES



1GB RAM

When it comes to providing reliable wireless connectivity in busy business environments, you need a solution that is both powerful and discreet. Whether you're running an open-air pop-up store, a festival food stand, or a cozy coffee shop in the park, you need a device that can withstand the challenges of busy, high-traffic areas. You need cAP LTE12 ax – with its fast, reliable mobile internet and incredible Wi-Fi 6 coverage for you and your clients!

Elevate Your Connectivity: literally and figuratively

In bustling high-traffic spaces, traditional access points can face numerous obstacles - devices get knocked over, misplaced, or even stolen. The cAP offers a simple yet effective solution: mount your access point on the ceiling. Not only this way of mounting elevates the device physically, it also ensures optimal signal distribution, minimizes interference from obstacles and reduces the risk of theft. Also, you'll have less cables and devices in your workspace to worry about – it's a win-win scenario!



More Than Just an Access Point

With a **powerful quad-core ARM CPU** running at 1.8 GHz, **gigabyte of RAM**, and the extremely flexible **RouterOS v7** at its core, the cAP LTE12 ax is far more than just a simple access point. It offers a range of advanced features, including complex firewall rules, IPsec hardware encryption, Wireguard support, advanced routing, multiple VPN tunnels for remote work or file-sharing, and even some light BGP action! This makes it an ideal solution for businesses that require secure, high-performance mobile connectivity in challenging environments.



Unstoppable 802.11ax (Wi-Fi 6) Radio and Improved Security

With Wi-Fi 6, you can utilize the full potential of the speedy CAT12 600 Mbps LTE modem. We're looking at up to 40% higher speed in the 5 GHz and up to 90% higher speed in the 2.4 GHz spectrum, if we compare it to the previous generations. Also, Wi-Fi 6 offers significantly improved energy efficiency and security. OWE/WPA3-PSK/WPA3-EAP encryption and management frame protection help preventing all sorts of attacks, like brute-forcing and Deauthentication Attacks.

If you have multiple access points over a larger area, you'll enjoy the improved seamless fast transition roaming – your devices will switch to the strongest signal... seamlessly!

cAP ax is also a great way to make your office network installation and maintenance so much easier, as it features **PoE-in and PoE-out**. That's right – you can **use cAP ax to power other devices**, such as network switches, CCTV cameras, or even another cAP ax! And, speaking of easy office networks... **Just a few clicks** in our latest **wifi-qcom CAPsMAN central management system** - and you're done setting up **hundreds of cAP ax devices**! You can use all sorts of MikroTik devices to run CAPsMAN effortlessly, for example - your main gateway.

GPeRx4

\$ 59

PDF



Effortlessly split a single high-power PoE port into multiple standard PoE connections with the compact and durable GPeR14i. Expand, extend, and power your network with ease!



ETHER #1 - POE-IN: 802.3 BT ETHER
#2-4 - POE-OUT: 802.3AF/AT



ALTERNATIVE POWERING
OPTION: 2-PIN TERMINAL



IP68 RATING: SOLID PROTECTION FROM
WATER, DUST, DIRT, AND SAND

The GPeRx4 is not your average Ethernet extender. This compact, outdoor-ready device is designed to **split a single 90W PoE-out port into multiple 30W PoE-out ports**, providing cost-effective flexibility for powering cameras, access points, and other devices.



Power and Expand with Ease

Take advantage of your high-power PoE-out port by splitting it into three standard PoE-out connections, ideal for adding more devices without upgrading your switch.

Built for Rough Conditions

Housed in a robust enclosure, the GPeRx4 can handle tough environments, making it the perfect choice for outdoor setups.

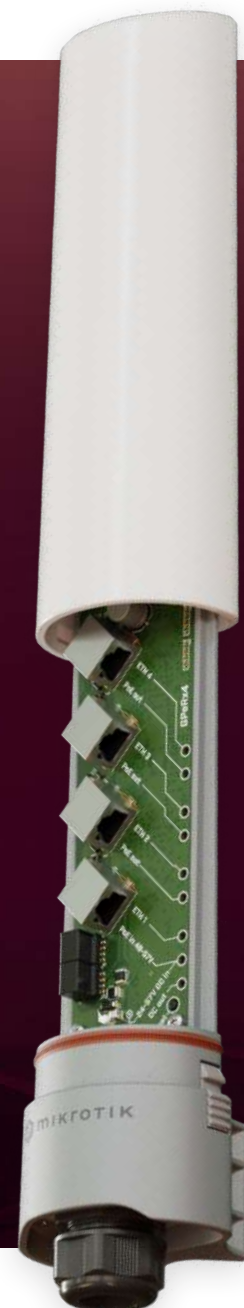
Flexible Power Options

Supports PoE-in and a 2-pin terminal, ensuring versatility for different power sources.

Advanced SwOS Lite Management

Manage your network effortlessly via Web with SwOS Lite, providing:

- Interface monitoring
- VLAN support
- Traffic shaping
- SNMP reporting
- Fault detection for GPEN links



CSS318-16G-2S+IN



Compact, efficient, and designed for effortless scalability.

16X 1 GIGABIT ETHERNET PORTS	2X 10 GIGABIT SFP+ PORTS	MAC FILTERING & VLANS	CAN BE CONFIGURED FROM YOUR WEB BROWSER
EASY TO STACK IN 1U RACK SPACE	PORT-TO-PORT FORWARDING	TRAFFIC MIRRORING	SILENT FANLESS PERFORMANCE

The CSS318-16G-2S+IN is a perfect fit for setups where **24 ports are too many** and **8 ports just aren't enough**. Its compact 10-inch form factor and cost-effective design make it the ideal solution for small and medium-sized offices, home networks, or rackmount environments where space and efficiency are key.

With **16 Gigabit Ethernet ports** and **2 SFP+ 10G uplink ports**, you get all the connectivity you need without unnecessary bulk. With its versatile mounting options, the CSS318-16G-2S+ **can be installed in 10-inch racks, standard 19-inch racks, or even side-by-side—fitting two switches in a single 1U 19-inch space.**



Configuration is effortless with MikroTik's lightweight **SwOS**. Accessible directly from your web browser, SwOS gives you the core functionality of a managed switch and more:

- Port-to-port forwarding
- Broadcast storm control
- MAC filtering
- VLAN configuration
- Traffic mirroring
- Bandwidth limitation
- Adjustment of MAC and IP header fields

The CSS318 consumes just **10W without attachments** and **up to 13W under full load**, keeping your network reliable while saving power.

Compact, scalable, and simple to configure — the CSS318-16G-2S+IN is ready to enhance your network at an unbeatable price.

FTC21

\$ 59

PDF



A weatherproof IP55 Fiber-to-Copper converter with smart management capabilities for your fiber and Ethernet setups.

The **FTC21** is not just a simple media converter. It runs a full version of **SwOS**, offering advanced management features:

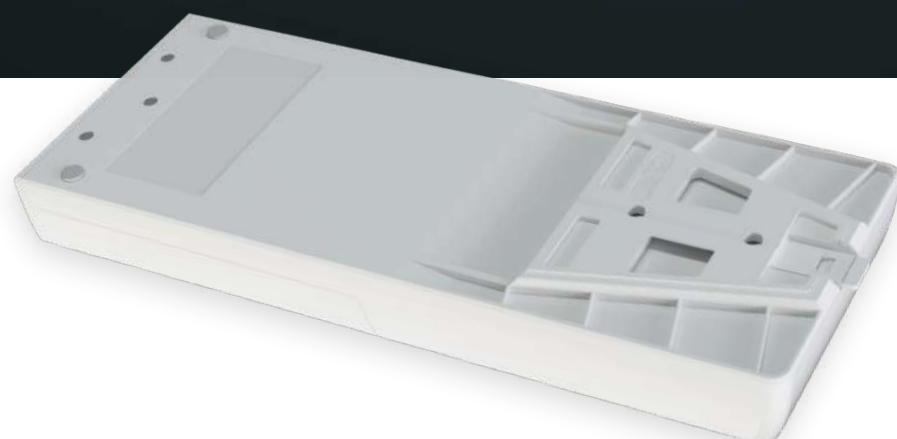
- Interface monitoring and management
- VLAN support
- SNMP reporting
- Basic traffic shaping
- Advanced packet filtering with Access Control Lists - allowing for packet filtering, accounting, and VLAN tagging based on Layer 2, 3, and 4 protocol header conditions.

This compact device is housed in a **weatherproof IP55 enclosure**, making it suitable for outdoor and harsh environments.

Powering is simple and flexible, with both **PoE-in** and a **DC jack** that support 24-57V. The FTC21 is highly efficient, consuming only **3W without attachments** and up to **4W fully loaded**.

It comes with everything you need for installation, including a **48V power adapter**, a **PoE injector**, and a **ceiling mount and fastening set**.

For reliable, smart Fiber-to-Copper conversion, the **FTC21** is the ideal choice.



Looking to convert 10-Gigabit connections?



Check out the FTC11XG!

IoT Updates

Reliable LoRa® Solutions at an Even Better Price



wAP LR8G kit

A **compact, weatherproof outdoor gateway** for LoRa® technology. The updated **868MHz LoRa® module** delivers enhanced **Rx sensitivity**, extending your range and improving reliability—even in rough conditions. This versatile device also includes:

- Built-in **GPS**.
- A **2.4 GHz WiFi interface** and Ethernet port for seamless integration.
- Durable design, tested to perform in various weather conditions.

\$ 149 **PDF**



LtAP LR8G LTE6 kit

A **rugged all-in-one device** for IoT connectivity, ideal for industrial or public use. Perfect for **transportation projects** or **logistics**, the LtAP LR8G LTE6 Kit combines:

- **LoRa® connectivity**, LTE, and GPS for maximum versatility.
- Dual-chain **2.4 GHz WiFi** for added flexibility.
- A tough, robust enclosure built for industrial and mobile setups.
- Mini SIM slot and a built-in modern LTE6 modem for fast and responsive mobile connectivity
- Enhanced **868MHz Rx sensitivity** for effective long-range communication.
- Many powering options, including automotive.

\$ 249 **PDF**



R11e-LR8G card

The simplest way to add **LoRa® connectivity** to any MikroTik device with a mini PCIe slot. Perfect for tight budgets without compromising performance, this card features:

- Exceptional **Rx sensitivity** up to **-141 dBm** for 868MHz, ensuring reliable long-range communication.
- Compact, efficient design for easy integration into existing setups.
- Cost-effective performance for IoT projects of any scale.
- Integrated GPS chip for LoRa packet timestamps in various setups.

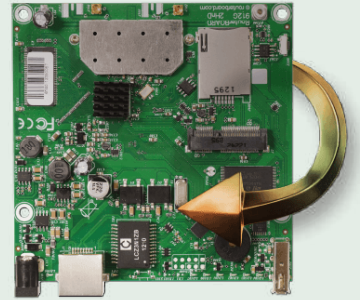
\$ 59 **PDF**



Return of the RB912: D.I.Y. Bestseller!

Due to popular demand, the RB912UAG-2HPnD RouterBOARD is back in production. Known for its versatility, this D.I.Y. favorite empowers you to build tailored solutions for your specific needs. Whether you're creating a highly customized network setup or crafting the right tool for your business, the RB912 is the ideal choice for professionals, hobbyists and innovators alike.

Shipping will resume in February 2025. Contact your favorite distributor today for more information!



10GbE for Everyone The Must-Have 10Gbase-T Switch



ServeTheHome
789K subscribers



New #MikroTips and tricks!



Engineer goes on a 100G adventure and learns about GEANT

Looking for more videos OUTSIDE the MikroTik office? [See THIS playlist!](#)

MikroTik Real Life Changelog #1 and Season's greetings 2024!

[HERE YOU CAN DOWNLOAD ALL THE VISUALS USED IN THIS NEWSLETTER](#)